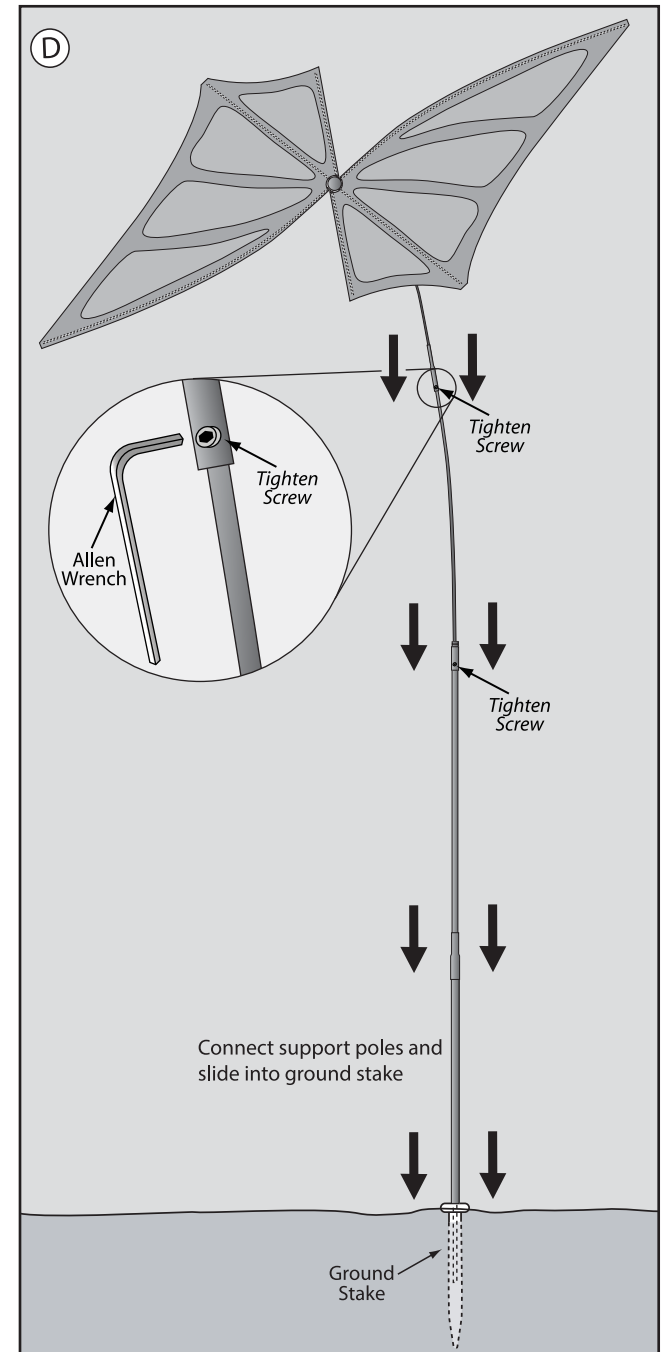
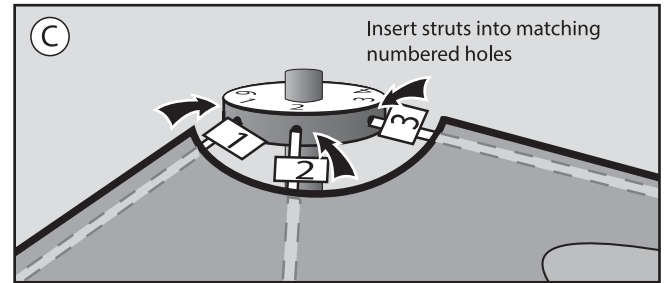
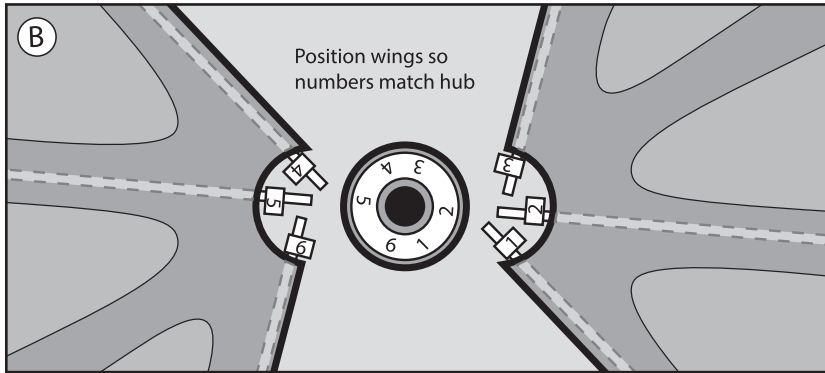
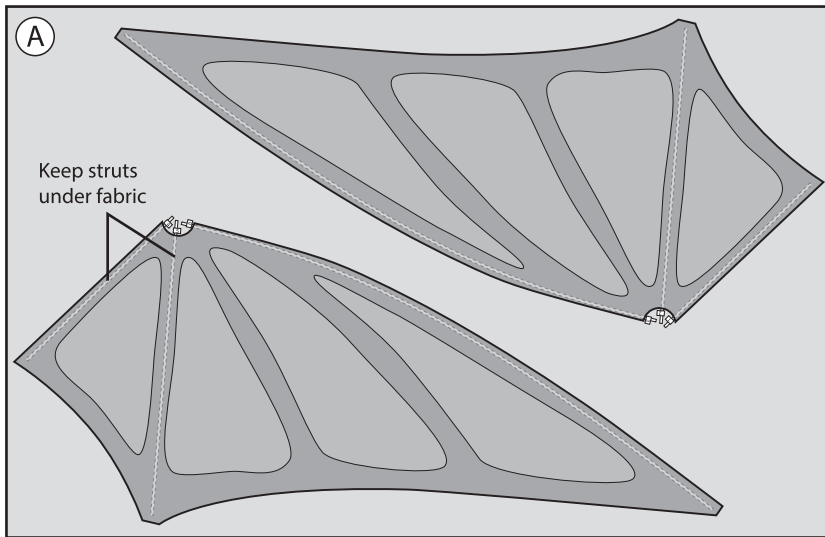


Butterfly Spinner *assembly instructions*

sku #22391, 22392, 22393



Step 1

Remove butterfly wings from packaging and unfold. Make sure the struts are facing the floor. (diagram A)

Step 2

Line up the numbers on the wing struts with the numbers on the hub. Keep the top of the hub up and the wing struts facing the floor. (diagram B)

Step 3

Insert the numbered struts into their matching holes in the rotating hub. (diagram C)

Step 4

Assemble the four parts of the Support pole and tighten the Hex Screw on the upper ferrule and the Hex Screw on the middle Ferrule using the included Allen Wrench. (diagram D)

Step 5

Pound Ground Stake into ground and insert non-ferruled end of Support Pole into Ground Stake. (diagram D)

PLEASE NOTE: Although your Butterfly Spinner is constructed with UV resistant SunTex™ fabric, it is recommended that you take it inside during storms and harsh weather to preserve its durability. Wind Range 0-18 mph.