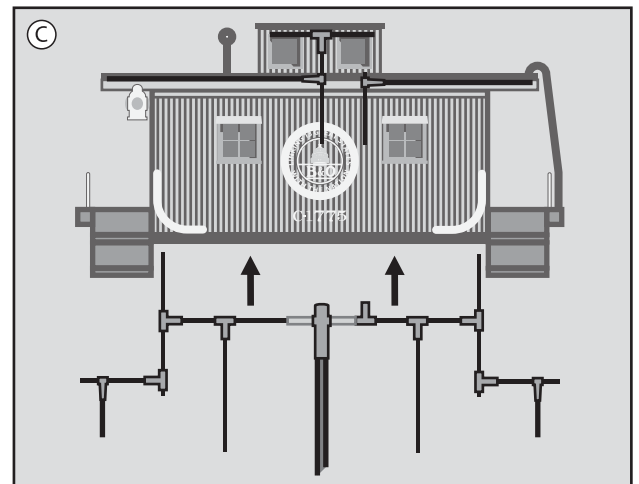
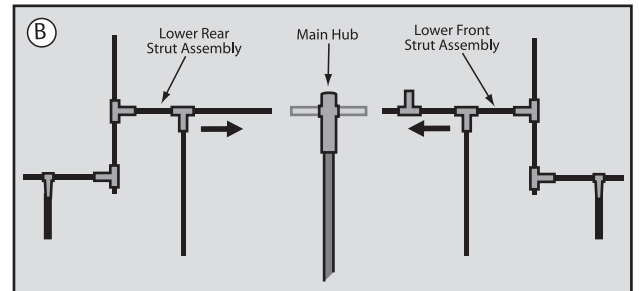
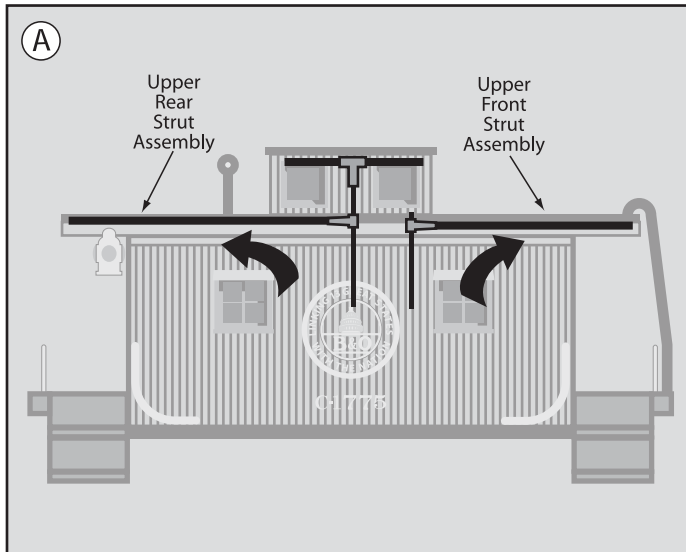
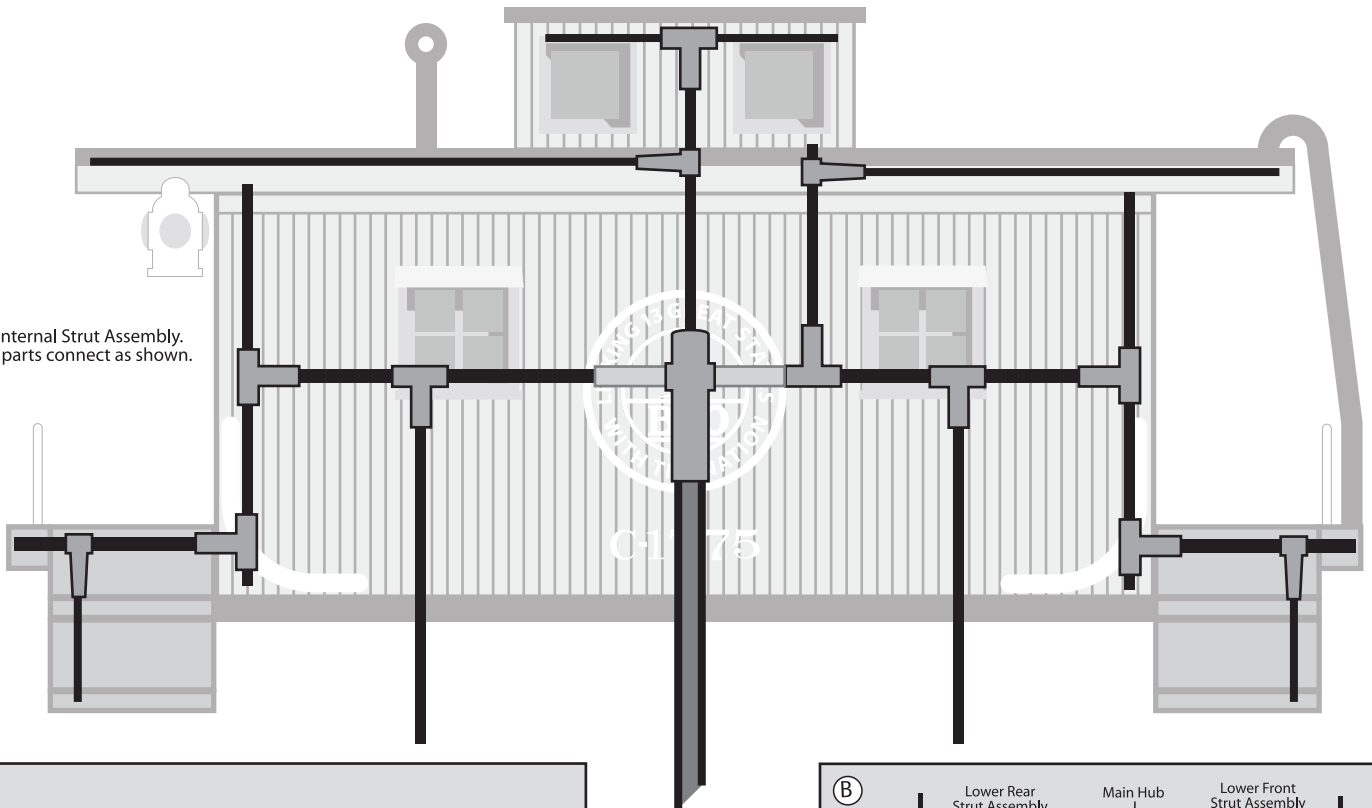


Completed Internal Strut Assembly.  
Make sure all parts connect as shown.



### Step 1

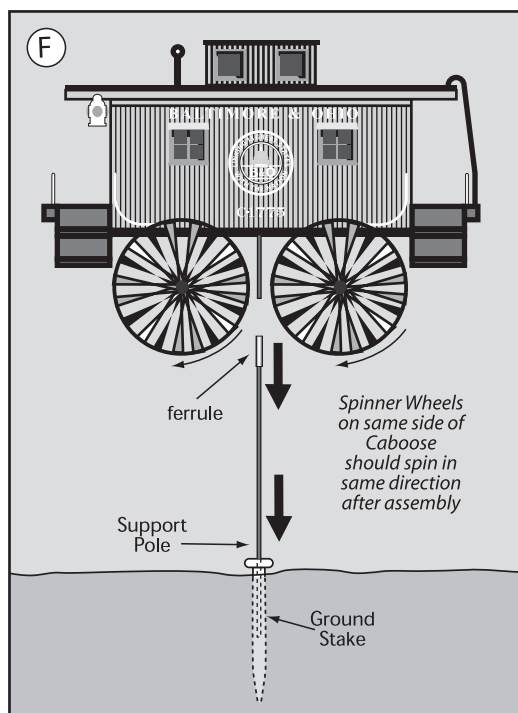
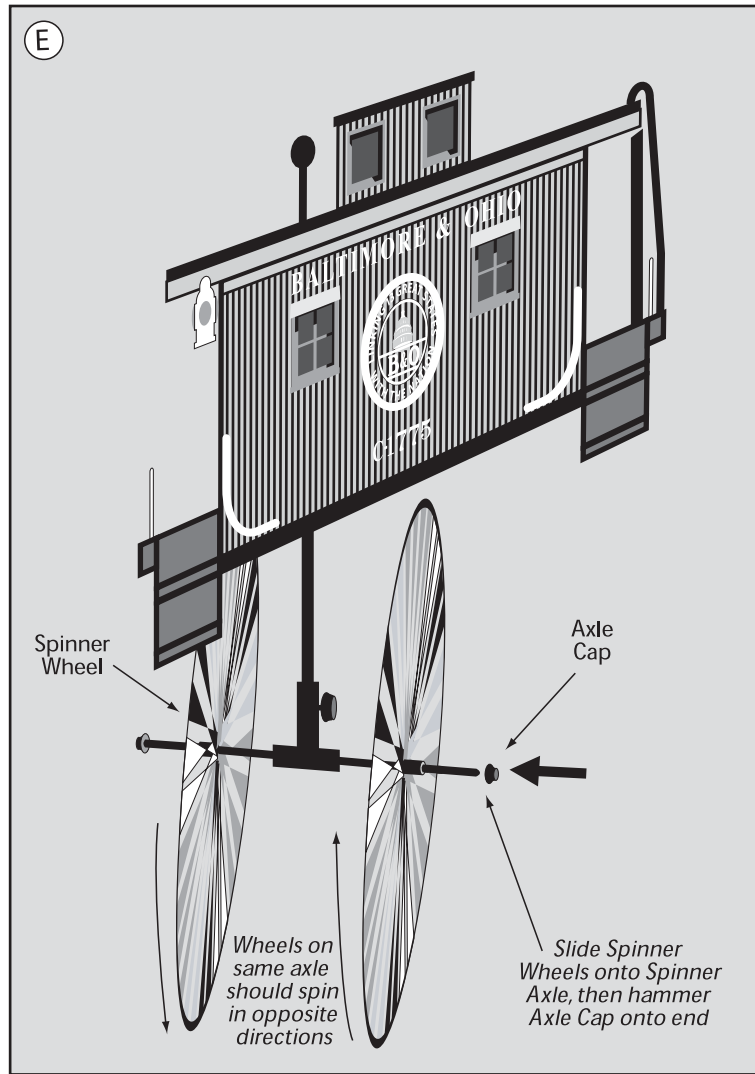
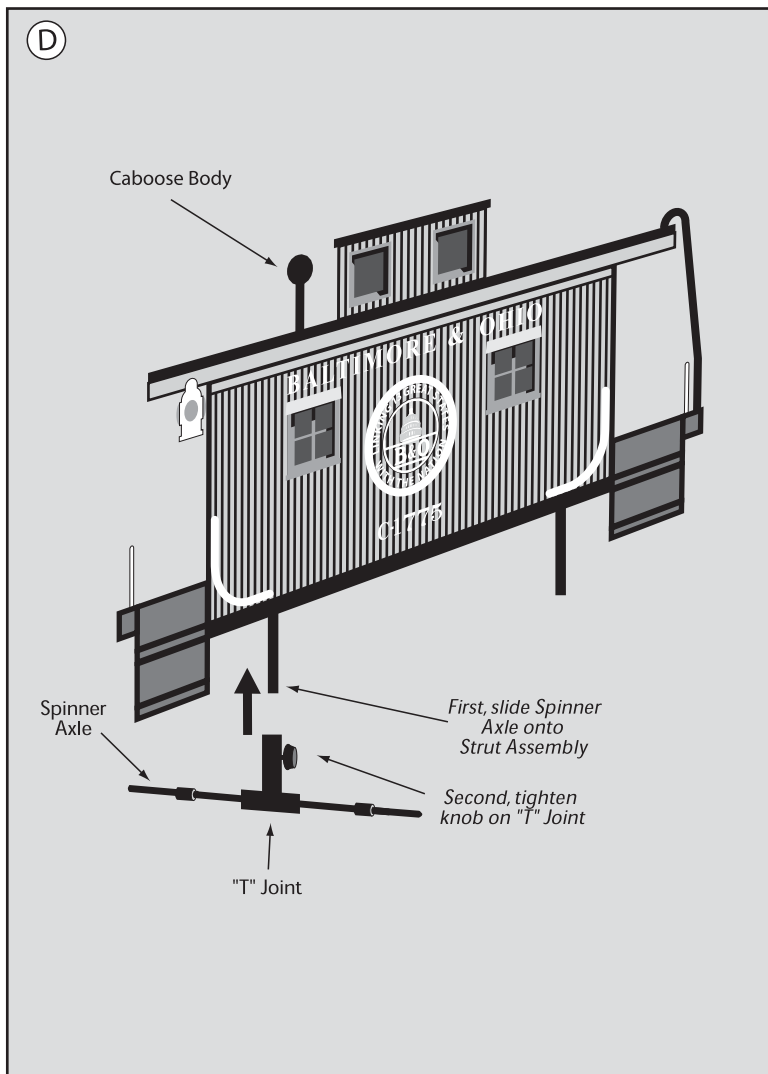
First, make sure that the Upper Front and Rear Strut assemblies are placed properly as shown in Diagram A. If they are not, slide each assembly up through the center of the spinner body and then to the right or left to match Diagram A.

### Step 2

Insert both the Lower Front and Rear assembly into the main hub as shown in Diagram B. This will complete the Lower Strut Assembly.

### Step 3

Un-Velcro the lower end of the fabric Caboose body. Slide the entire Lower Strut Assembly up into the Caboose body through this opening, making sure to connect both the Upper and Lower Strut assemblies within the Caboose body. The fully assembled Strut Assembly should match the diagram at the top of this page. (Diagram C)



#### Step 4

Take one of the Spinner Axles and slide it onto the Rear Strut Assembly at back of Caboose Body. Tighten the knob on the "T" Joint to hold the Axles to the Struts. (diagram C)

#### Step 5

Take one of the four Spinner Wheels and slide it onto one of the two Spinner Axles. Slide second Spinner Wheel onto Spinner Axle. **(Note: Spinner Wheels on same side of Caboose should spin in same direction and Spinner Wheels on same axle should spin in opposite directions. Before putting second Axle Cap into place, make sure wheels spin as shown in diagrams E and F.)** Pound second Axle Cap onto uncapped end of Spinner Axle using a mallet or piece of wood. (diagram E)

#### Step 6

Repeat Step 4 using the remaining Spinner Axles and the four remaining Spinner Wheels to assemble the front Spinner.

#### Step 7

Pound Ground Stake into ground and insert non-ferruled end of Support Pole into Ground Stake. Insert Upper Pole Section of completed Caboose Spinner into ferrule on top of Support Pole. (diagram F)

**PLEASE NOTE: Although your Caboose Spinner is constructed with UV resistant SolarMax™ fabric, it is recommended that you take it inside during storms and harsh weather to preserve its durability.**