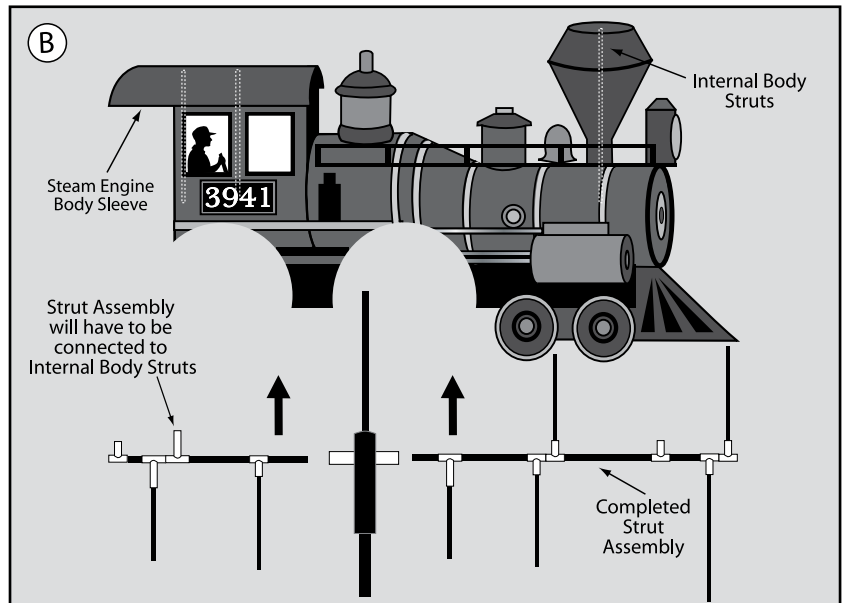
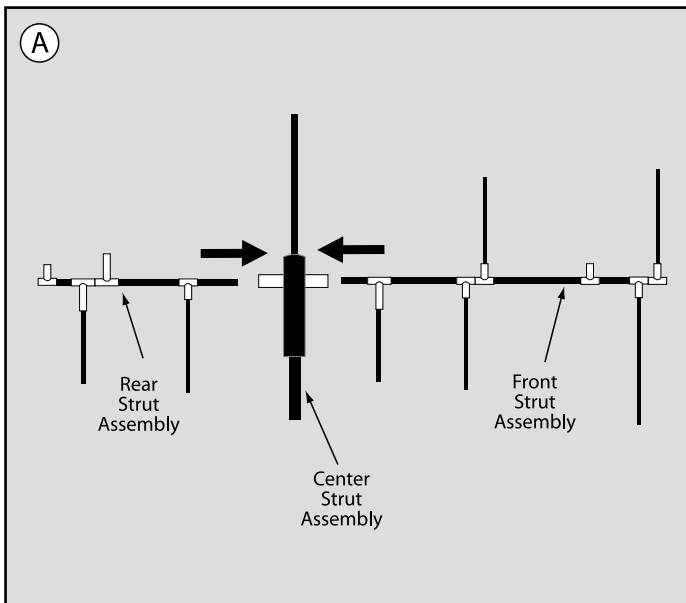
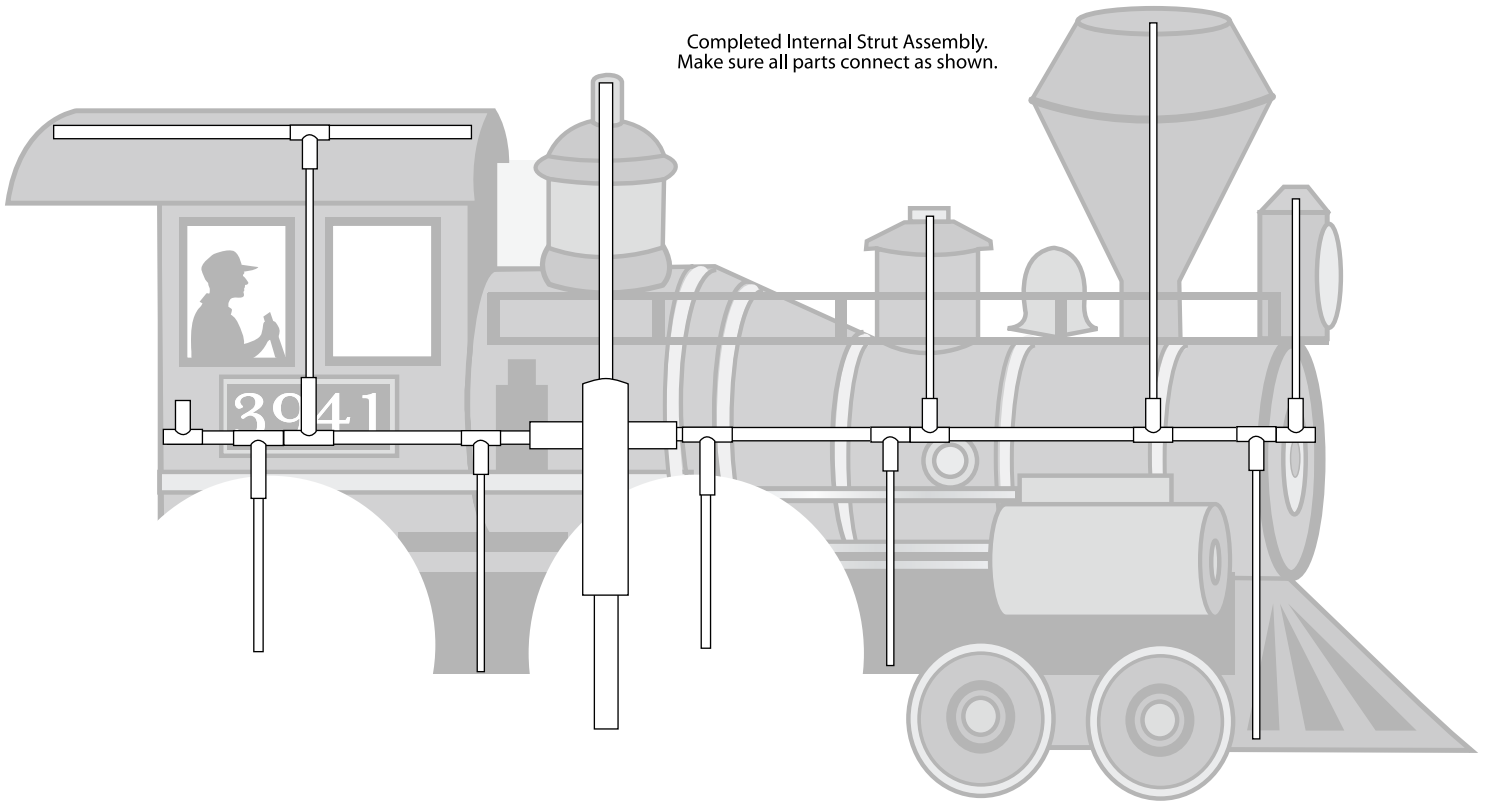


Completed Internal Strut Assembly.
Make sure all parts connect as shown.

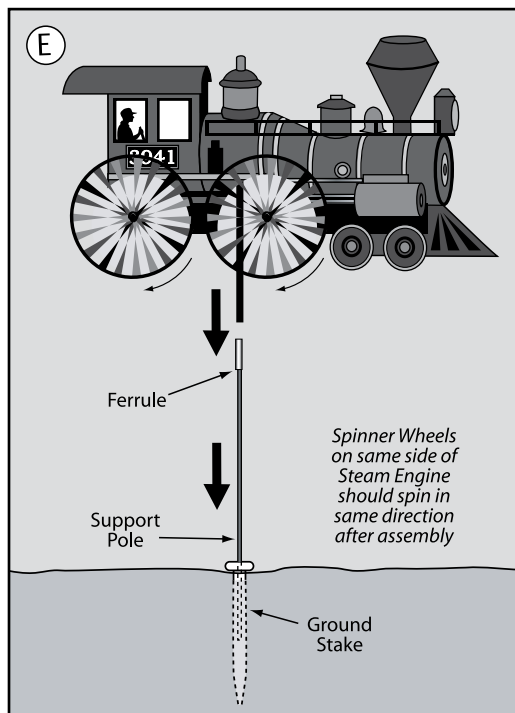
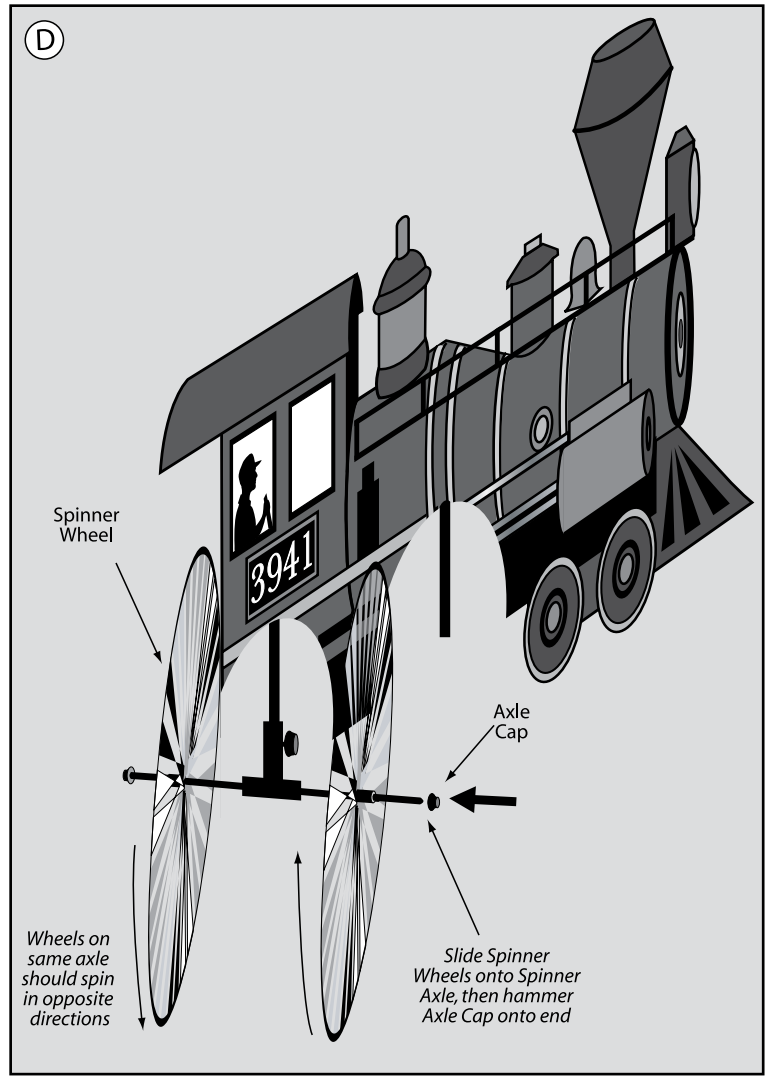
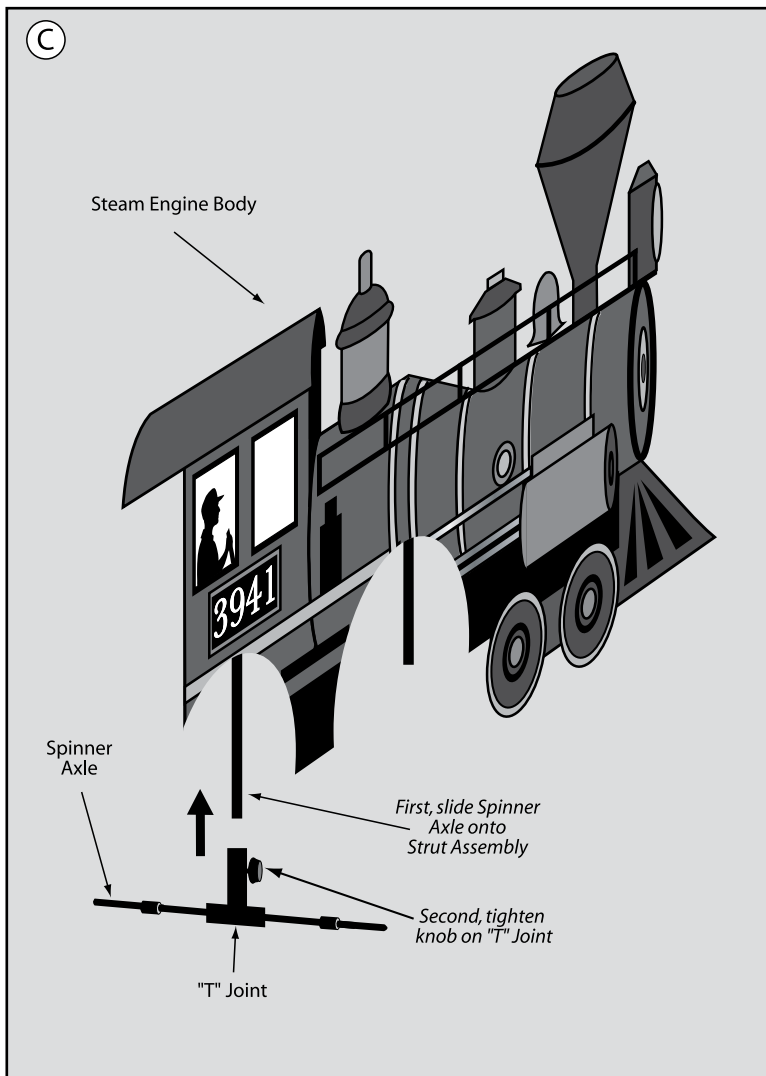


Step 1

The Strut Assembly of your Steam Engine spinner is shipped in three sections. Connect Center Rods of the Rear Strut Assembly and the Front Strut Assembly to the Center Rod of the Center Strut Assembly as shown. (diagram A)

Step 2

Open Velcro straps and insert completed Strut Assembly into bottom of Steam Engine Body Sleeve as shown. Slide the remaining strut through the opening at the back of the Steam Engine Body. Reclose Velcro straps. (diagram B)



Step 3

Take one of the four Spinner Wheels and slide it onto one of the two Spinner Axles up to the Axle Cap. Then slide the Spinner Axle into "T" joint at the back of the Steam Engine Body. (diagram C)

Step 4

Slide the second Spinner Wheel onto the Spinner axle up to the "T" joint. (Note: Spinner Wheels on the same side of the Steam Engine should spin in the same direction and Spinner Wheels on the same axle should spin in opposite directions. Before putting second Axle Cap into place, make sure wheels spin as shown in diagram E.) Pound second Axle Cap onto uncapped end of Spinner Axle using a mallet or piece of wood. (diagram D)

Step 5

Repeat Steps 3 and 4 using second Spinner Axle and the two remaining Spinner Wheels to assemble the front Spinner.

Step 6

Pound Ground Stake into ground and insert non-ferruled end of Support Pole into Ground Stake. Insert Upper Pole Section of completed Steam Engine Spinner into ferrule on top of Support Pole. (diagram E)

PLEASE NOTE: Although your Steam Engine Spinner is constructed with UV resistant SunTex™ fabric, it is recommended that you take it inside during storms and harsh weather to preserve its durability.