

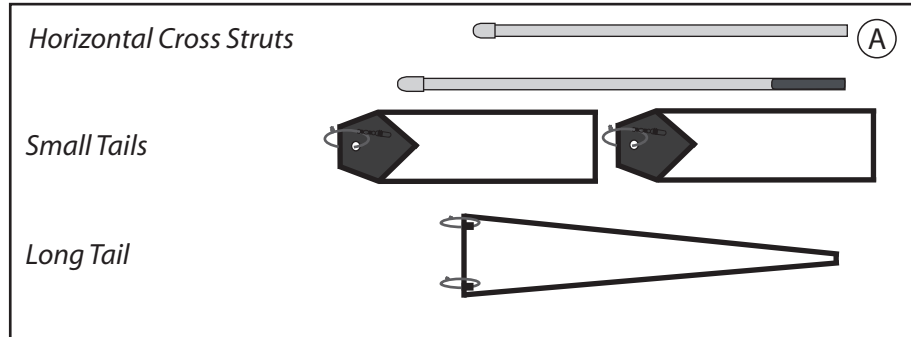
QUILTED 10.5' STRATA DELTA *assembly instructions*

Step 1:

Unfold kite making sure that the keels are on the bottom.

Step 2:

Organize the struts, two small tails, and the large tail.
(Diagram A)

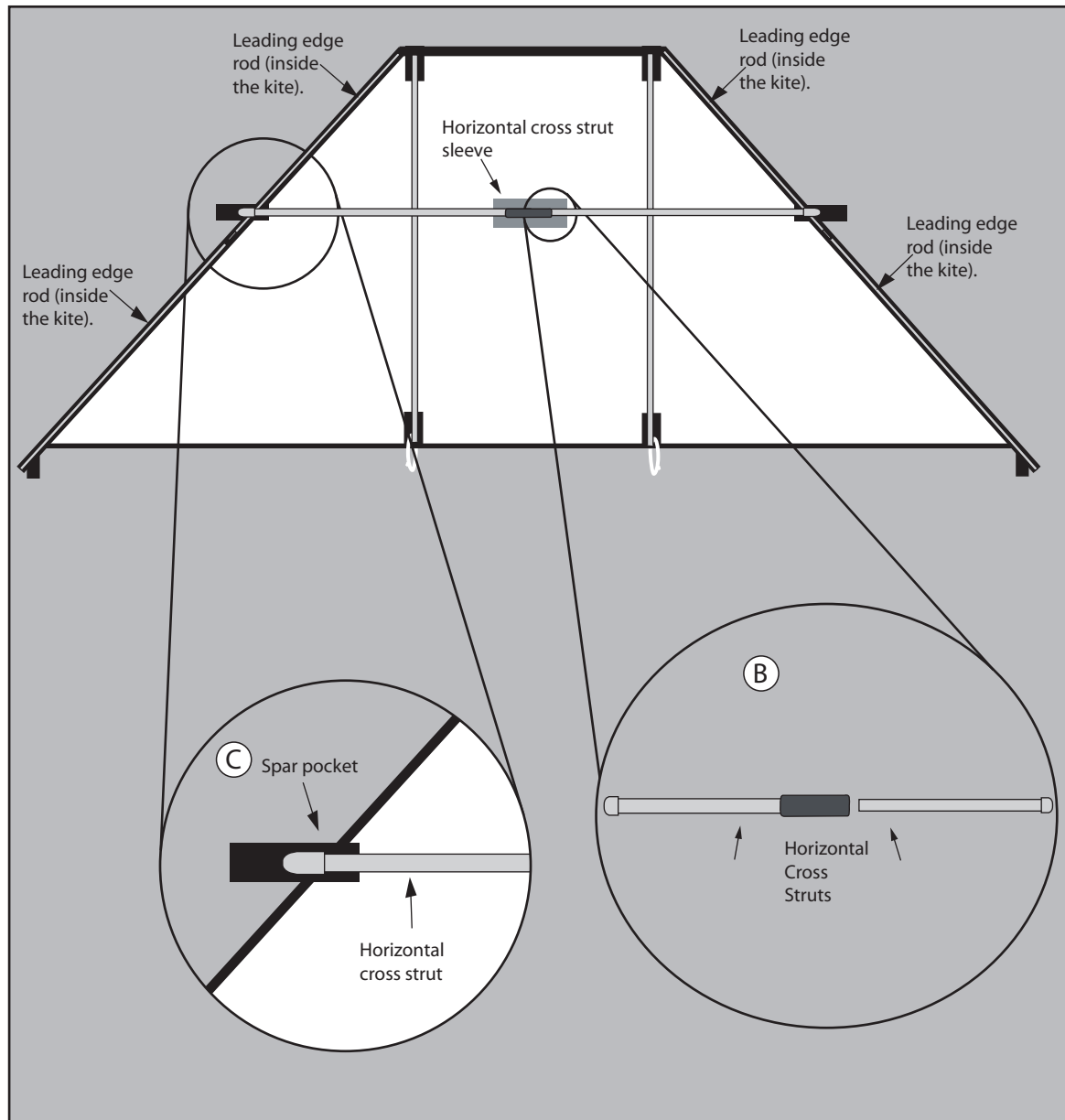


Step 3:

Connect the two horizontal cross struts.
(Diagram B)

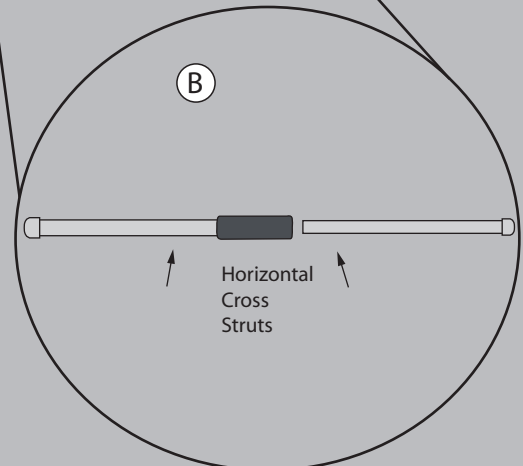
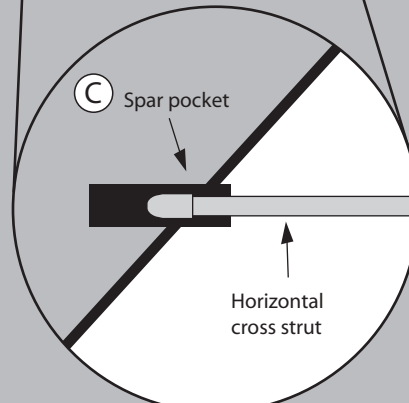
Step 4:

Insert the horizontal cross struts through the center sleeve and into the spar pocket on either side of the kite.
(Diagram C)



Step 5:

Connect the small tails to the kite's tail connection tabs at the outside tips of the kite.
(Diagram D)



Step 6:

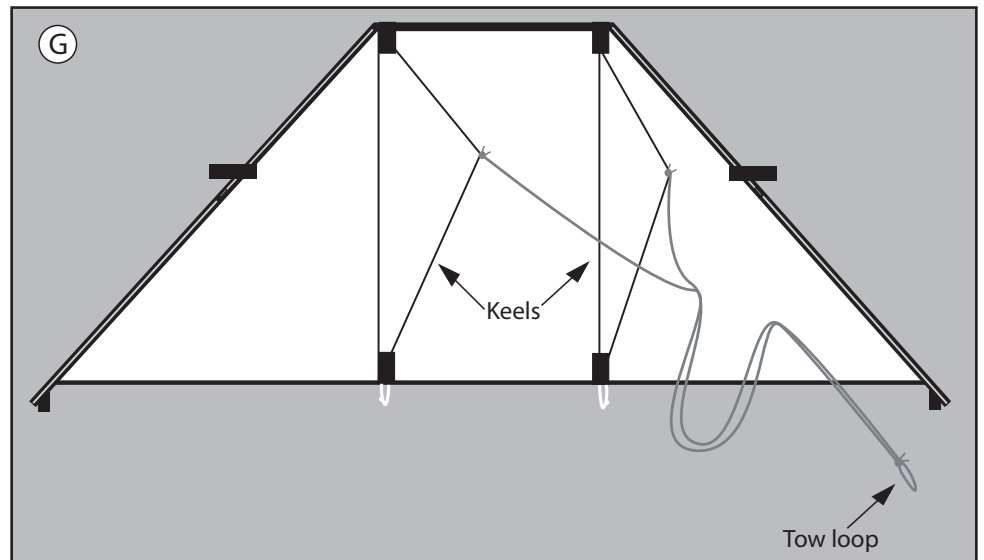
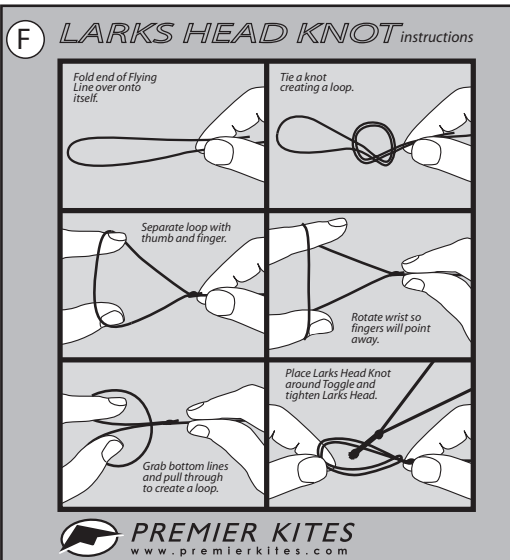
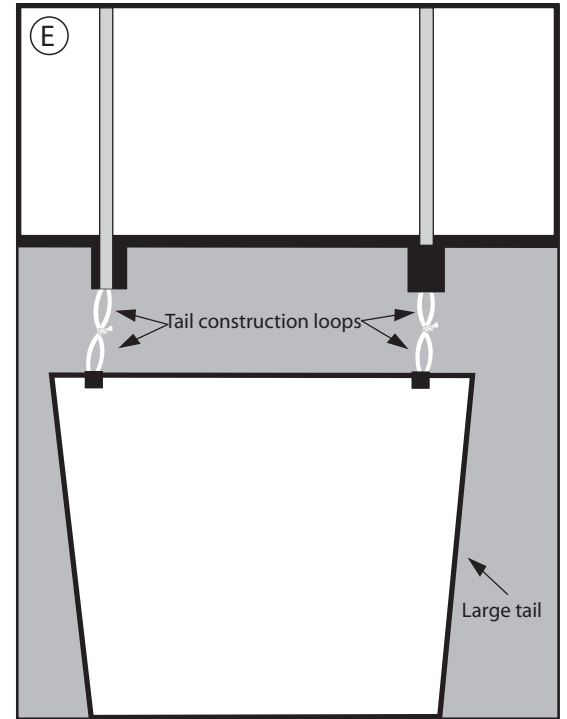
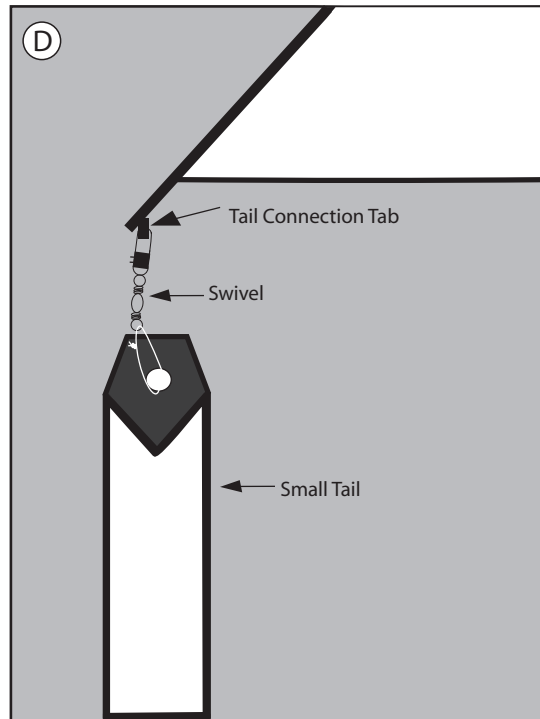
Attach the center tail . Locate the connecting strings at the top of the tail. These strings will connect to the center strings from the kite using a Lark's Head Knot. (Diagram E)

Lark's Head Knot (Diagram F)

Step 7:

Kite should now be ready to fly. Attach the kite line to the tow loop at the end fo the bridle. (Diagram G)

Note: In light wind consider omitting use of the center tail.



FLIGHT INSTRUCTIONS:

- Attach flying line to Tow Loop.
- Have a friend stand about 75 ft. downwind from you and hold the kite with its Leading Edge pointed towards the sky.
- As the wind catches the kite, signal your friend to release it while you bring in the line with long steady pulls.
- Slowly let out more line as the kite flies upward.

RECOMMENDED LINE: 250 LB TEST LINE

OPTIMUM WIND CONDITIONS FOR QUILTED 10.5' STRATA DELTA

| BEAUFORT SCALE | CALM | LIGHT AIR | LIGHT BREEZE | GENTLE BREEZE | MODERATE BREEZE | FRESH BREEZE | STRONG BREEZE |
|-----------------------------------|------------------------|---|---|--|--|---|--|
| | smoke rises vertically | Direction of wind shown by smoke, by smoke, but not by wind vanes | Wind felt on face, leaves rustle, ordinary vane moves | Leaves and small twigs in constant motion; wind extends light flag | Raises dust and loose paper; small branches move | Small trees & leaves begin to sway; crested wavelets form on inland water | Large branches in motion; utility wire whistle; windows rattle |
| [M.P.H.] | 0 | 1 2 3 | 4 5 6 7 | 8 9 10 11 12 | 13 14 15 16 17 18 | 19 20 21 22 23 24 | 25 26 27 28 29 30 |
| WIND | | | | | | | |
| Quilted 10.5' Strata Delta | | | | | | | |

Note: Wind conditions aloft may vary considerably from those found near ground level.