

## ASSEMBLY

### Step 1:

Remove the kite from the bag and locate the Head and Shoulder Struts. (diagram A)

### Step 2:

Insert the Lower Spine Strut through the Spine Sleeve and through the Bridle Loop. Insert one end into the Ferrule. Insert the other end into Head Pocket A. (diagram B)

### Step 3:

Insert one Main Cross Strut into Head Pockets B and C. Insert the second Main Cross Strut into Head Pockets D and E. (diagram B)

### Step 4:

Insert the Horizontal Head Strut into Head Pockets F and G. (diagram B)

### Step 5:

Insert the Upper Head Strut through the Upper Head Strut Sleeve and into the Head Pockets H and I. (diagram B)

### Step 6:

Insert the Lower Head Strut into the Head Pockets J and K. (diagram B)

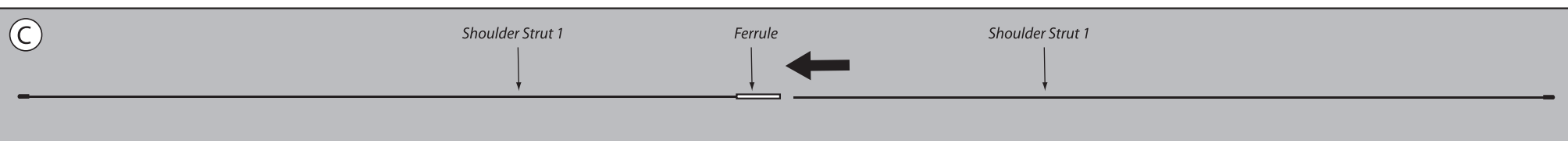
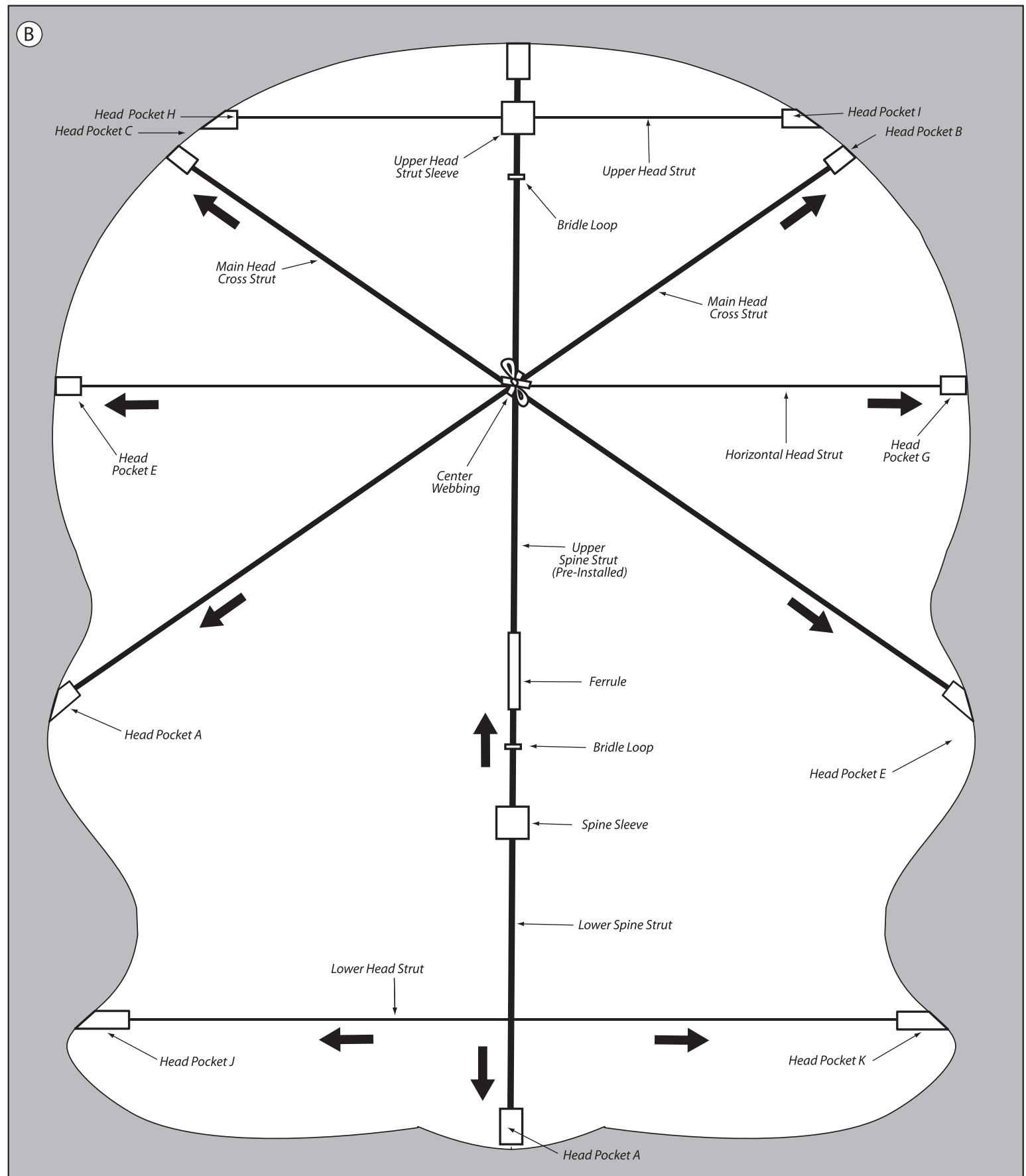
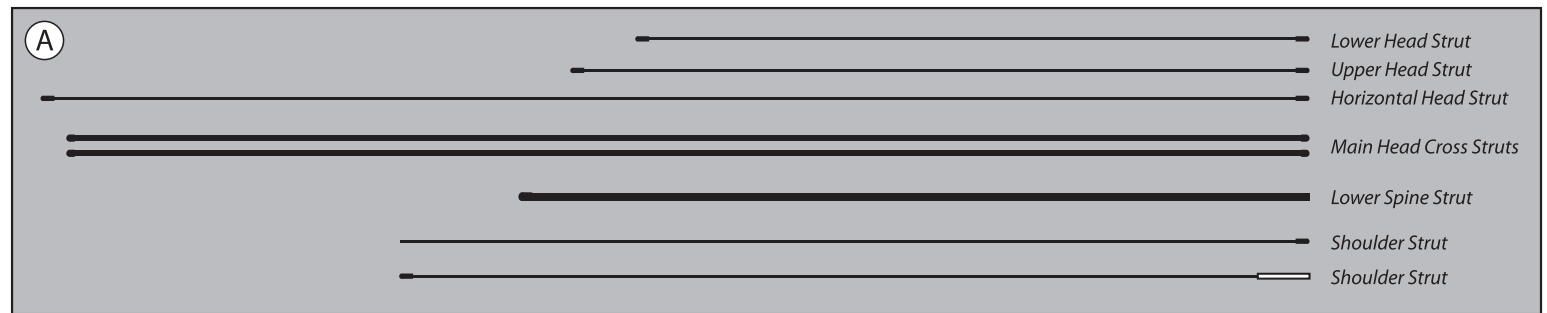
### Step 7:

Tie the Spine, Cross Struts, and Horizontal Cross Strut together with the Center Webbing. Use a simple bow knot Like tying your shoe. (diagram B)

### Step 8:

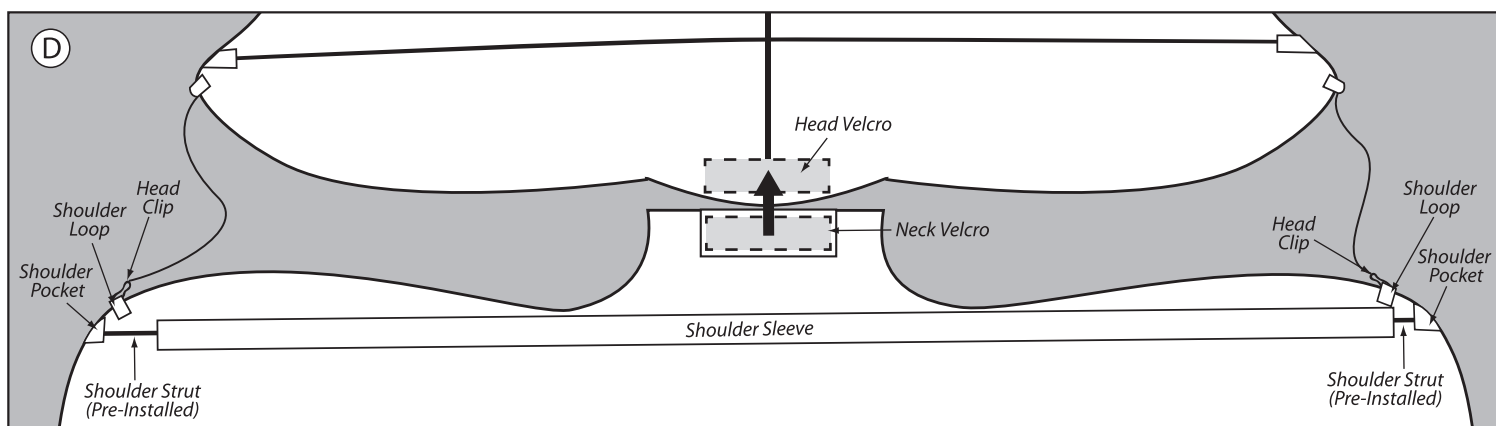
Take Shoulder Struts and join at Center Ferrule. (diagram C)

(Continued on back)



**Step 9:**

Slide joined Shoulder Struts through Shoulder Sleeve and slip into Shoulder Pockets. You may need to pull back the end of the Pocket with some force to stick the Shoulder Pockets in place. (diagram D)



**Step 10:**

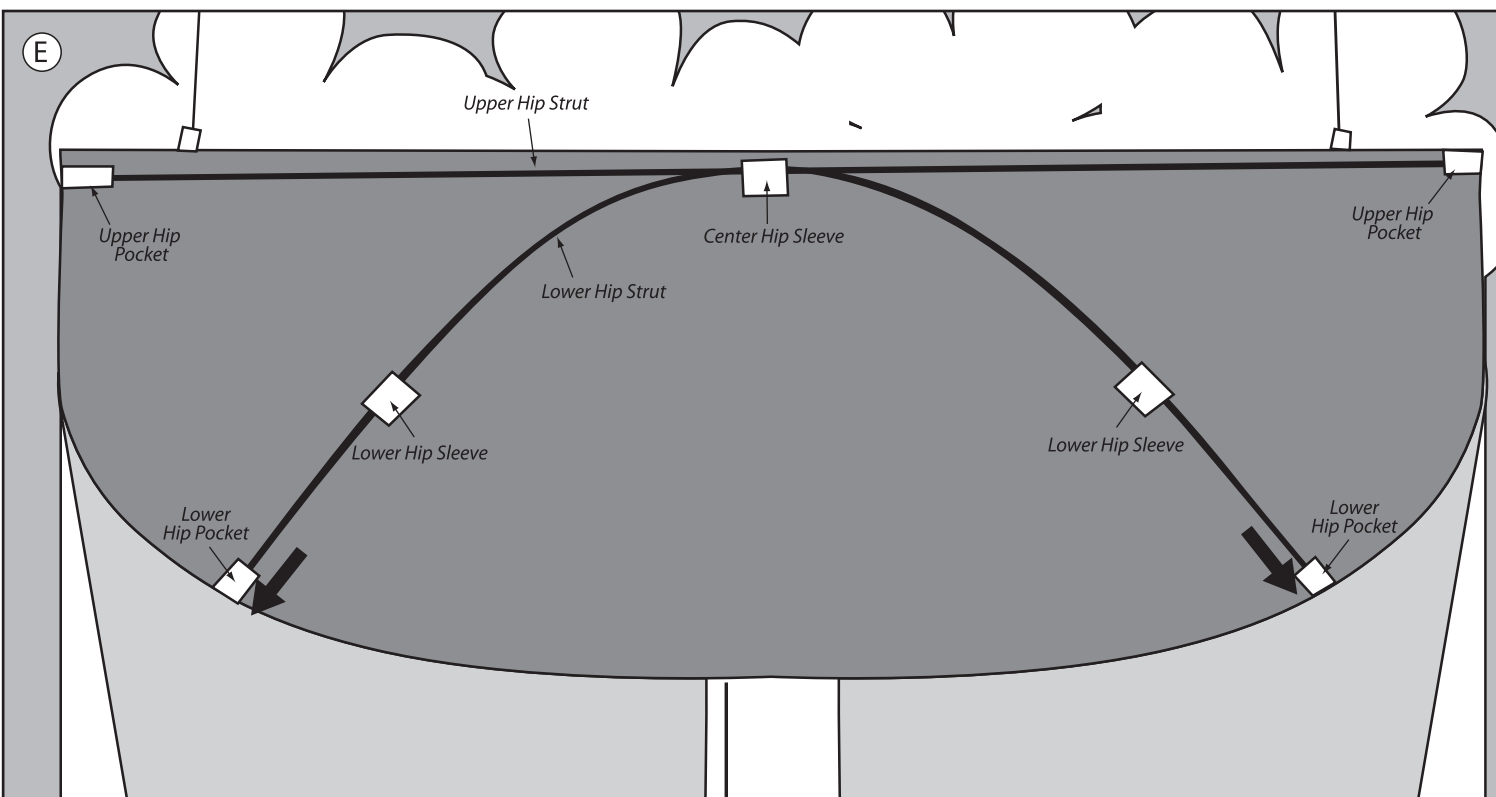
Line the Center of the Neck Velcro with the center of the Head Velcro and attach Velcro together. Spine Strut should be as centered on Neck Velcro as possible. (diagram D)

**Step 11:**

Attach Head Clips to Body Shoulder Loops. (diagram D)

**Step 12:**

The Upper Hip Strut and the Lower Hip Strut come pre-installed in the Center Hip Sleeve. Bend the Lower Hip Strut into a curve and insert through the Lower Hip Sleeves and into the Lower Hip Pockets. (diagram E)



**Please Note:**

Your Hula Girl Kite is designed so that the head can be easily disconnected from the body, This feature allows for easier assembly, disassembly, and storage.

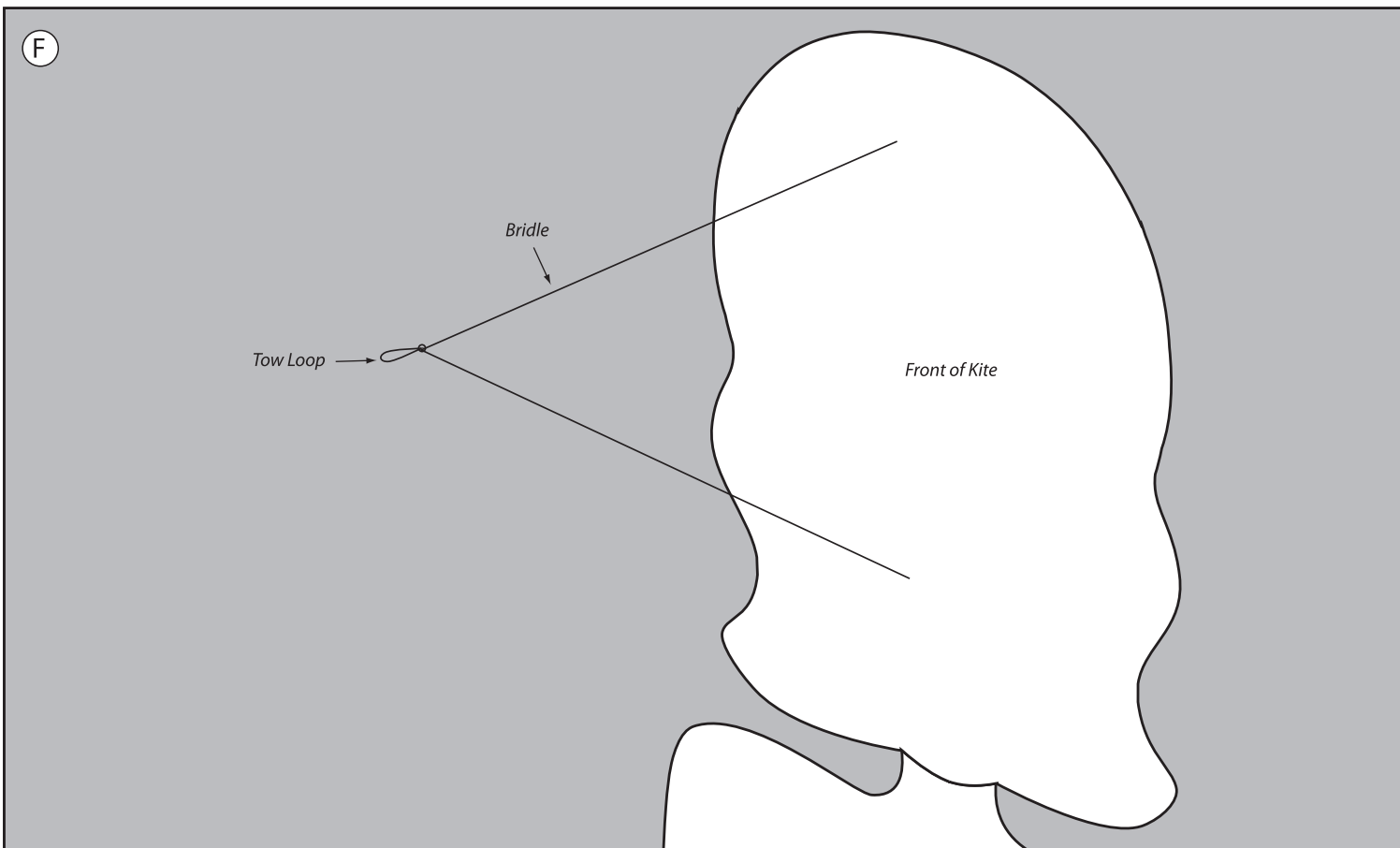
**FLYING**

**Step 1:**

Attach flying line to tow loop. (diagram F)

**Step 2:**

Have a friend stand about 75 feet downwind from you and hold the kite with its nose pointed towards the sky. As the wind catches the kite, signal your friend to release it while you steadily pull in line until the kite is aloft. As the kite flies upward, slowly release more line.



Please note all un-hemmed edges of your Hula Girl Kite's fabric are hot-cut to prevent fraying however some fraying will occur under ordinary use. This is normal and will not affect the performance of the kite.

**OPTIMUM WIND CONDITIONS FOR 21 FT HULA GIRL KITE**

BEAUFORT SCALE	CALM	LIGHT AIR	LIGHT BREEZE	GENTLE BREEZE	MODERATE BREEZE	FRESH BREEZE	STRONG BREEZE
WIND [M.P.H.]	0	1 2 3	4 5 6 7	8 9 10 11 12	13 14 15 16 17 18	19 20 21 22 23 24	25 26 27 28 29 30
<b>21 FT HULA GIRL KITE</b>							

Note: Wind conditions aloft may vary considerably from those found near ground level.